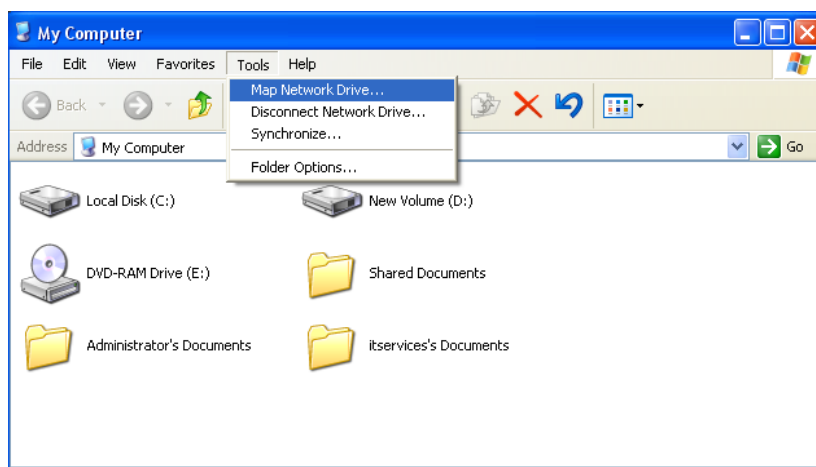




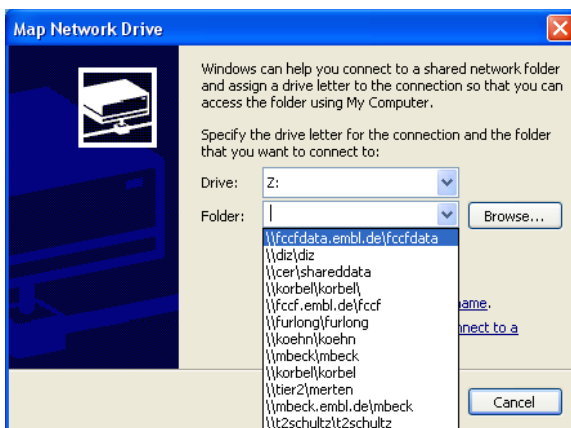
## Log-in on FCCF Data Transfer Server

To use the data server you must be registered as a FCCF-User. Ask to the personal of the facility for help to get access.

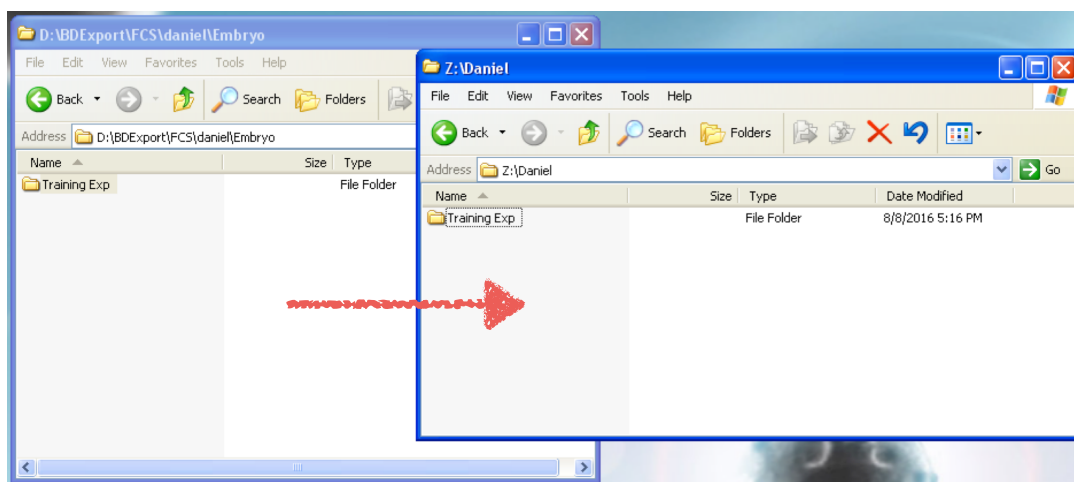
Double click on My computer short cut. In the top menu bar select > Tools > Map Network Drive



Choose from the dropdown list the FCCF-data server named: \\fccfdata.embl.de fccfdata and login with: embl\your name and password. **Optional: login directly into your group drive.**

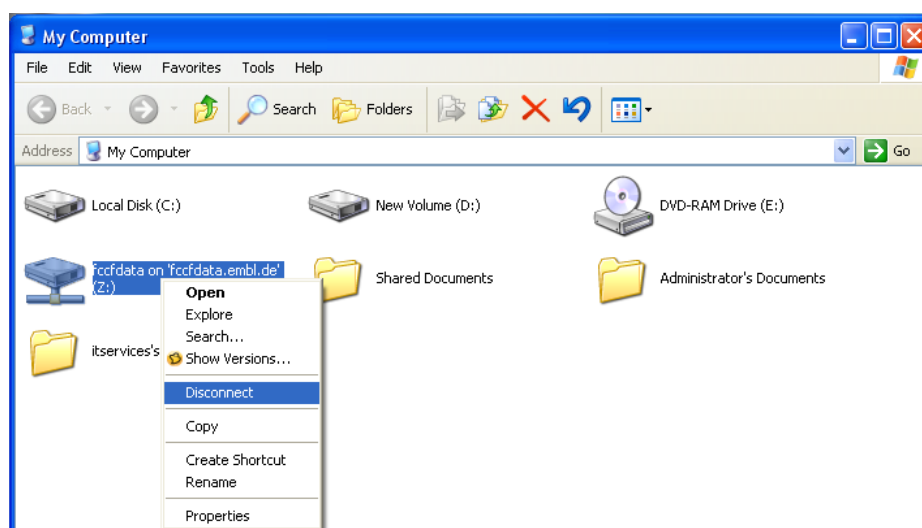


Create a folder with your name in the fccf data server. Transfer your fcs files from BDEExport\FCS\your folder (previously exported from Diva) to your new folder in the fccf data server.



Please note that data storage on the fccf data server is only possible for maximum 1 month, the server will delete automatically data older than one month.

When you have finished transferring your data, please disconnect from the server to allow the next user to log in with his own credentials.



Important: The data server is only for transfer. All files will be automatically deleted after one month. You will receive an automated email 2 and 1 week before deletion.

You can access the network drive on your PC or Mac using the following addresses and your regular EMBL login details:

PC: \\fccfdata.embl.de/fccfdata

Mac: cifs://fccfdata.embl.de/fccfdata