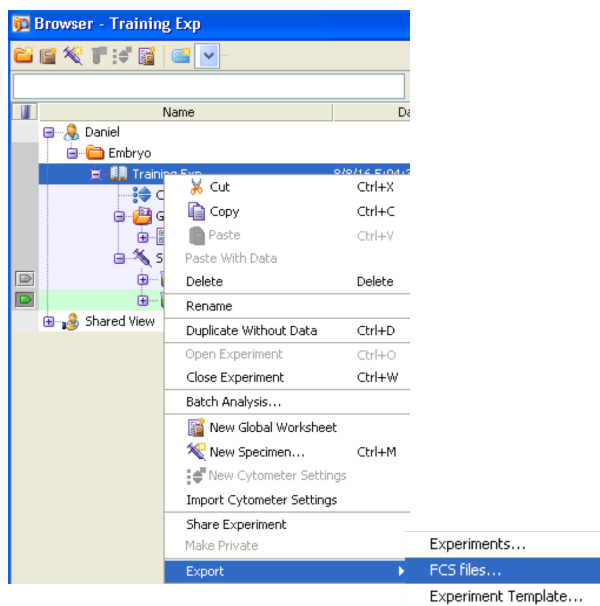
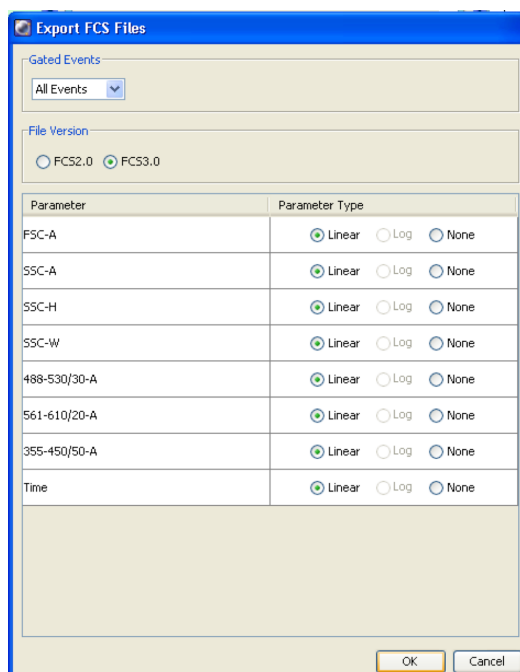


## Exporting FCS files from DIVA software

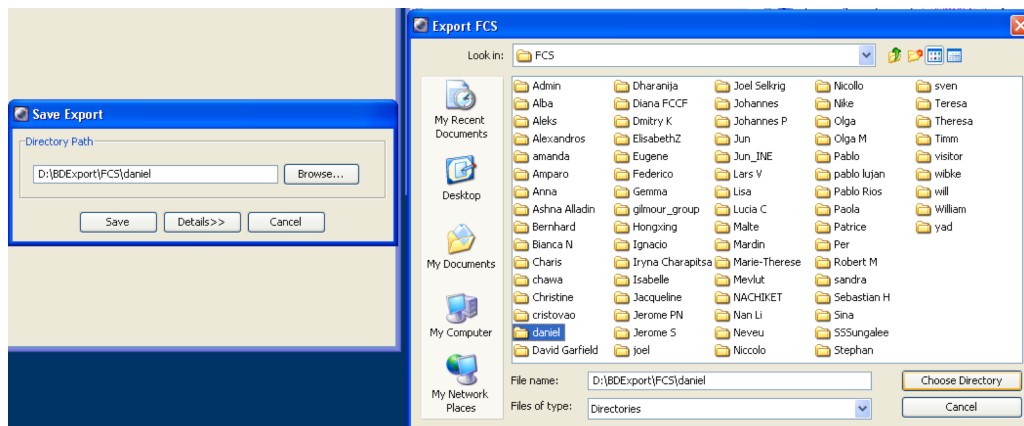
Right click on the experiment name > Export > Export FCS files



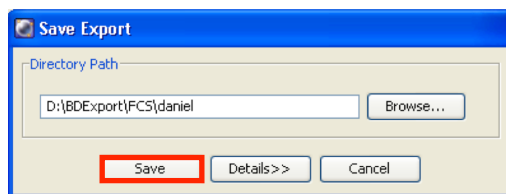
Data format query window opens: make sure you export files in FCS 3.0 format. All data will be exported in linear mode, best suited for FlowJo processing and archiving.



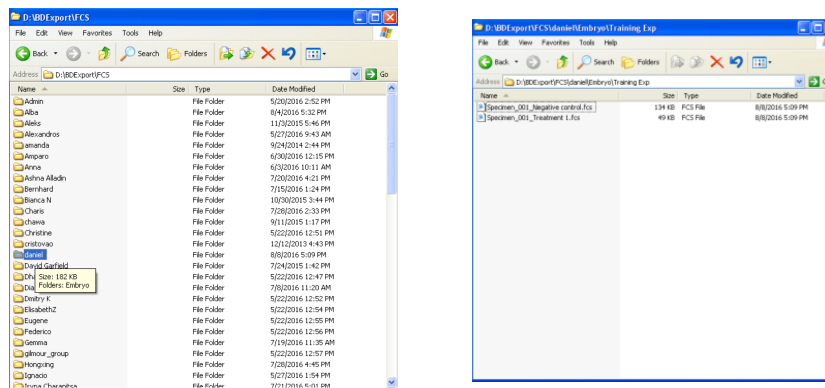
Choose location for export: Always use **D:\BDExport\FCS** and then create or choose your existing export folder.



Select your folder and click Save.



Verify the presence of the FCS files in your folder



Your data has now been exported and saved on the following location:  
**D:\BDExport\FCS\your folder**

Please transfer your data from D:\BDExport\FCS\your folder onto the fccf data server or your group drive to ensure proper long-term storage. Please delete your experiment from the FACSDiva database (Browser window) when you verified that your transfer was successful (test opening all the files with FlowJo).