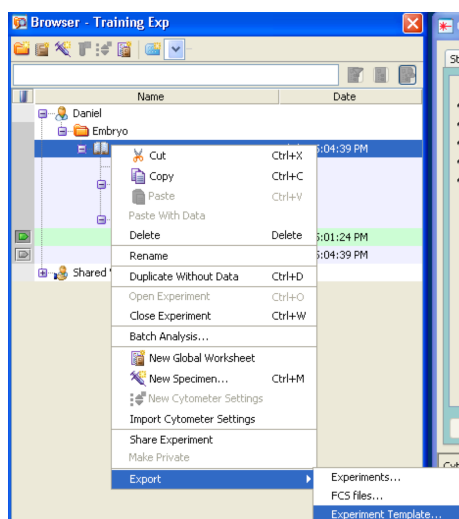
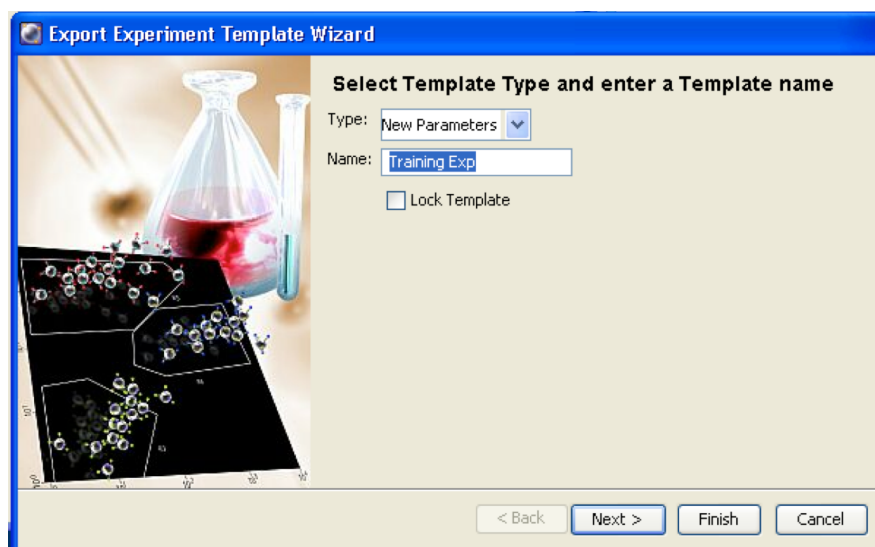


Saving and Retrieving an Experiment template

Open the experiment by doing double click on the experiment name.
Right click > Export > Experiment Template



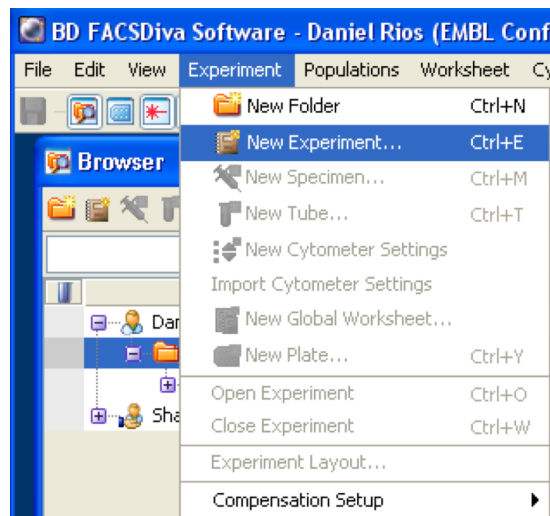
The Export Experiment Template Wizard opens:
In the type window select: New parameters
In the name window: Type the name of the experiment



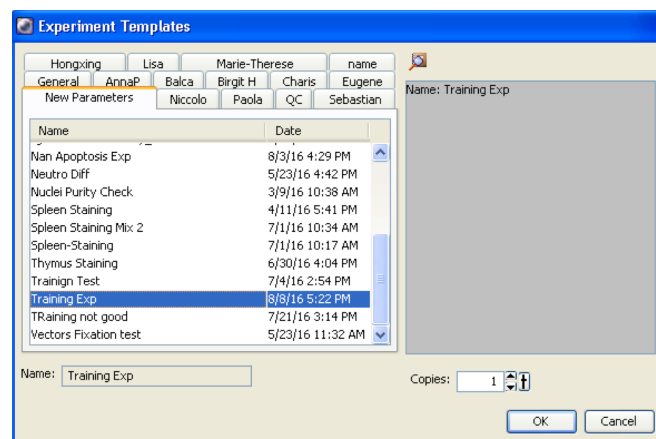
Press: Next > to add comments to the template, then press Finish.

To retrieve an experiment template:

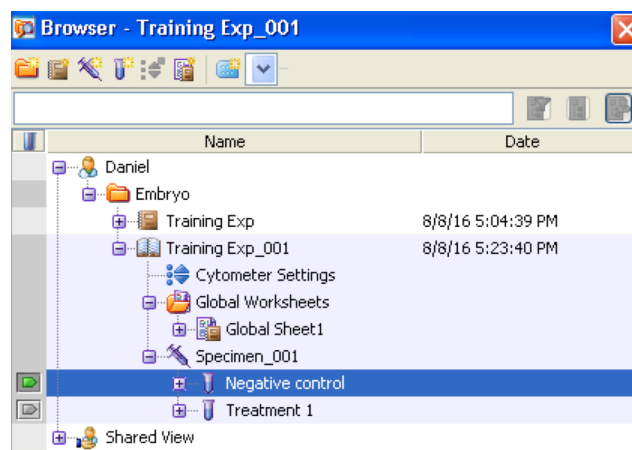
Go to the top menu bar and click on Experiment > New Experiment



Experiment Template window opens: Select the New Parameters tab and choose from the menu, the experiment template you would like to use.



Click OK and the experiment will appear and open in the browser:



Rename the experiment and start the acquisition of your samples :)

